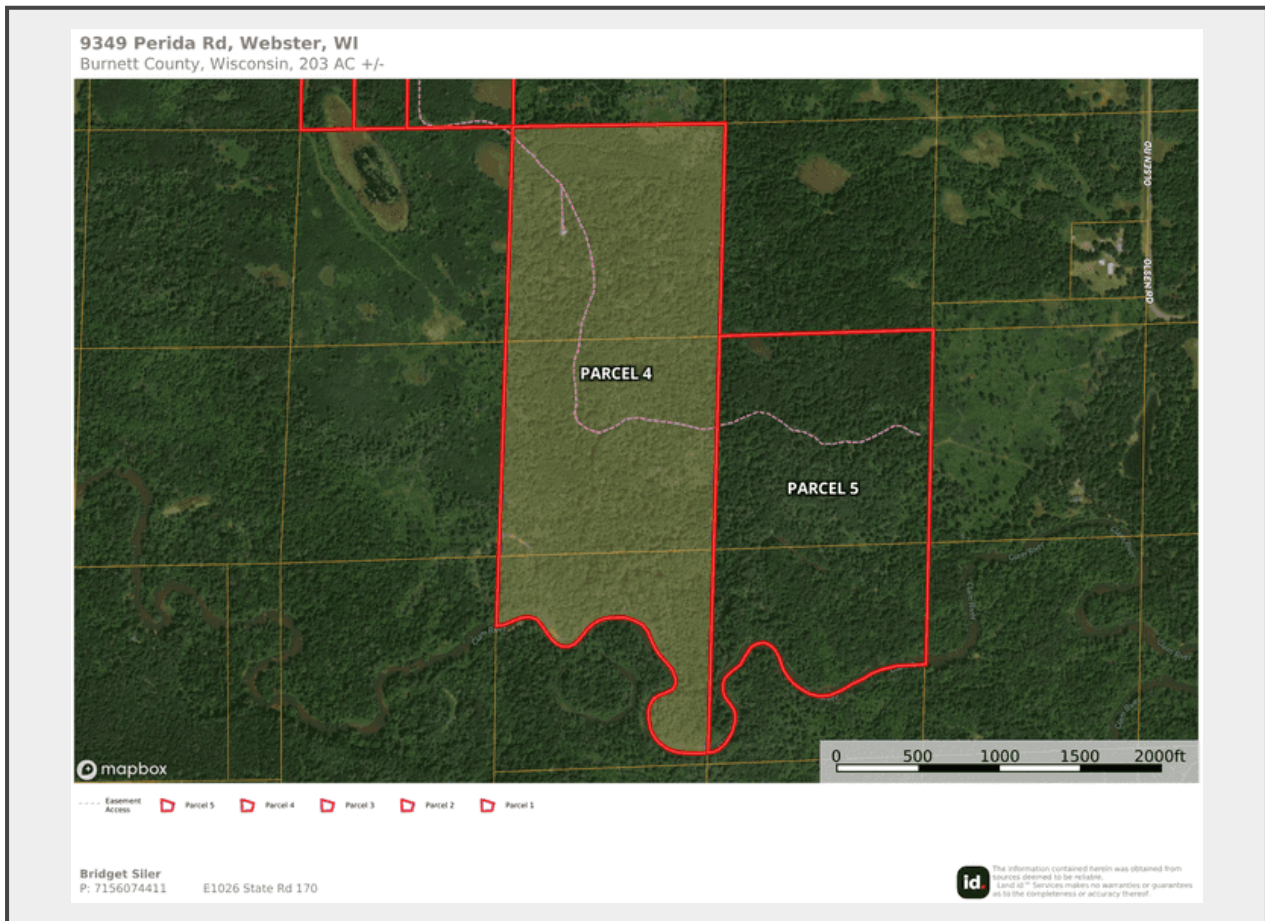


Sale Name: 203± Acres, 5 Parcels, Over 4000ft of Frontage on Clam River, Beautiful Wooded Recreational Land, Webster - Burnett County, WI

LOT 4 - 9349 Perida Rd, Webster, WI 54893 - 99.3± Acres



Description

44' x 32' Shed

12' sidewalls

steel roof

steel siding

9' x 44' lean-to on east side of shed (8' tall on short side)

shed uninsulated

concrete floor

2- service doors

1- 9' x 10' overhead door

1- 10' x 10' overhead door

14' x 16' "Living Area" inside shed

propane lights and stove

wood stove

2000± ft frontage along Clam River

Easement access will be granted from Auction Lot 3 for access to Auctions Lots 4 & 5

Burnett County, WI PIN #s 07-016-2-39-17-10-2 01-000-011000, 07-016-2-39-17-10-2 04-000-011000, 07-016-2-39-17-10-3 01-000-011000

Quantity: 1



**[https://
www.multiparhansenauctiongroup.com/](https://www.multiparhansenauctiongroup.com/)**