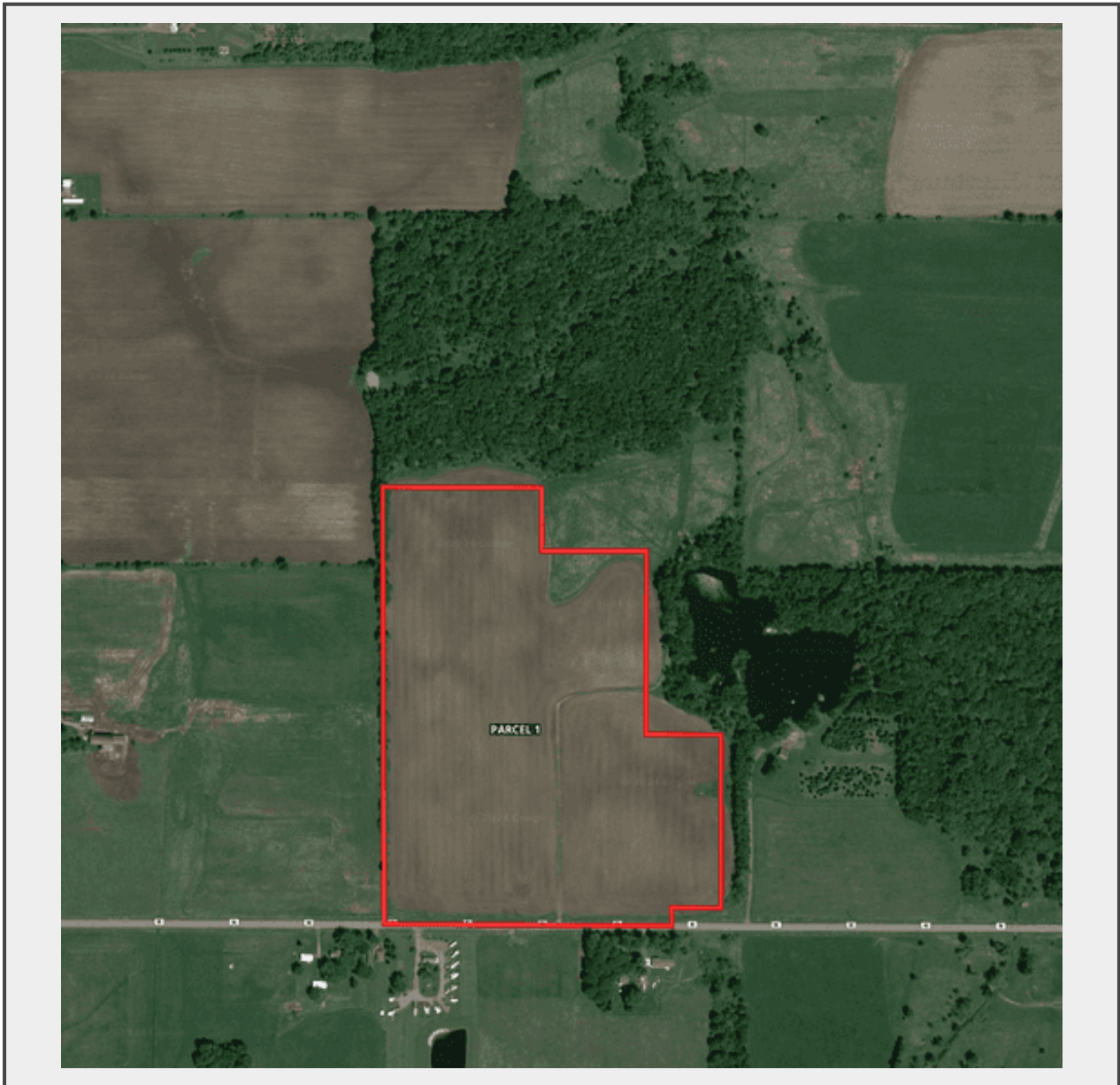


**Sale Name:** 80± Acres Tillable & Recreational Land Offered in 2 Parcels, Arpin - Wood County, WI

**LOT 1 - Parcel 1 - 39± Acres**



**Description**

39± acres, field access off county road N, level ground, 1.5 miles northeast of Arpin, currently planted in Alfalfa

**Quantity:** 1



[https://  
www.multiparhansenauctiongroup.com/](https://www.multiparhansenauctiongroup.com/)